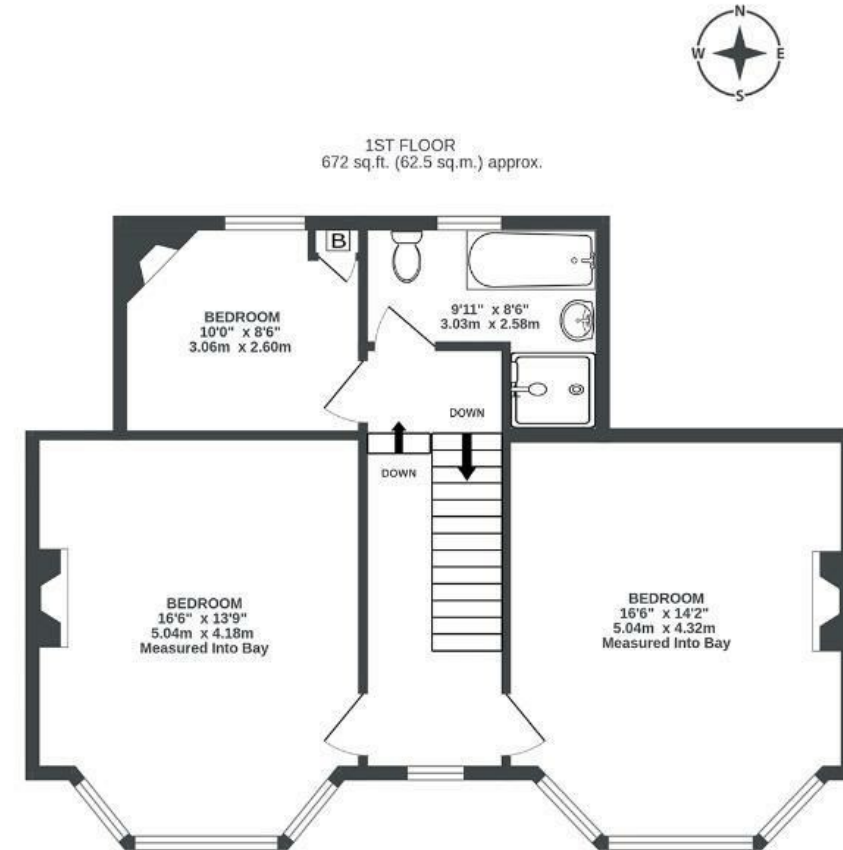
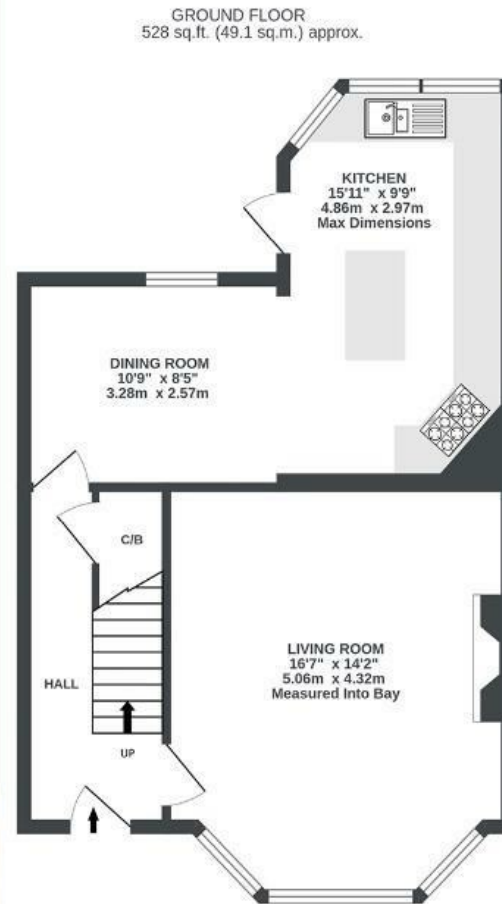


St Johns Lane

BEDMINSTER

APPROXIMATE FLOOR AREA
111.5 SQM / 1200 SQFT



Illustrations are for reference purposes only, measurements are approximate, not to scale.

Boardwalk

St. Johns Lane , BRISTOL

£

£425,000



BS3 5AU

zzz

3 Bedrooms



1 Bathrooms

"We've loved redecorating the property in recent months. Although it has been a rental for us, it was the spacious rooms and brilliant location that first drew us to the home."

